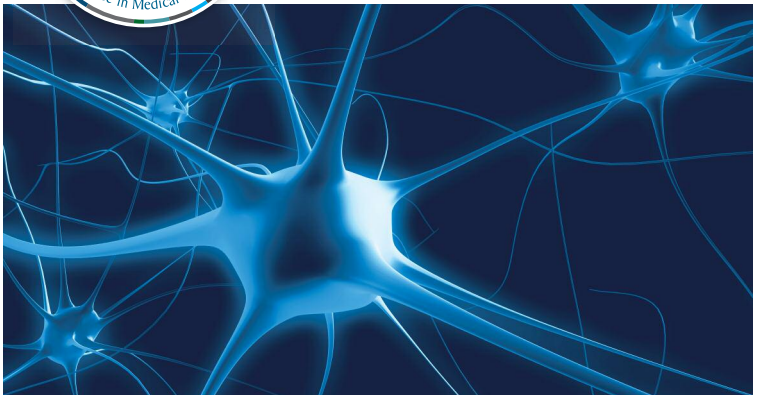


REGIONAL WORKSHOP
PRELIMINARY PROGRAMME



**From bench to bedside:
news and views in multiple
sclerosis**

29 October 2016 - Muscat, Oman



From bench to bedside: news and views in multiple sclerosis

Overview

The multiple sclerosis landscape has changed dramatically in the last few years. New insights into the immunopathogenesis of the disease and the consequent development of new therapeutic approaches, demand continuous medical education in this field. This workshop aims to update and share knowledge about diagnosis and treatment of MS, focusing on a risk benefit profile of available MS drugs and appropriate management of side effects.

Learning objectives

By attending this workshop, participants will be able to:

- Illustrate MS diagnostic criteria and the key elements of differential diagnosis
- Explain the main immunological targets of currently used and future MS treatments
- Describe the risk/safety profiles and appropriate monitoring of MS treatments

Target audience

Neurologists involved in the management of MS patients.

Chairs

Giancarlo Comi

Department of Neurology
Institute of Experimental Neurology
Vita-Salute San Raffaele University
Milan, Italy

Bassem Yamout

Multiple Sclerosis Center
Clinical Research
American University of Beirut Medical Center
Beirut, Lebanon

CME Provider

EXCEMED is a non profit foundation dedicated, since the last four decades, to the development of high-quality medical education programmes all over the world.

EXCEMED adheres to the guidelines and standards of the European Accreditation Council for Continuing Medical Education (EACCME®) which states that continuing medical education must be balanced, independent, objective, and scientifically rigorous.

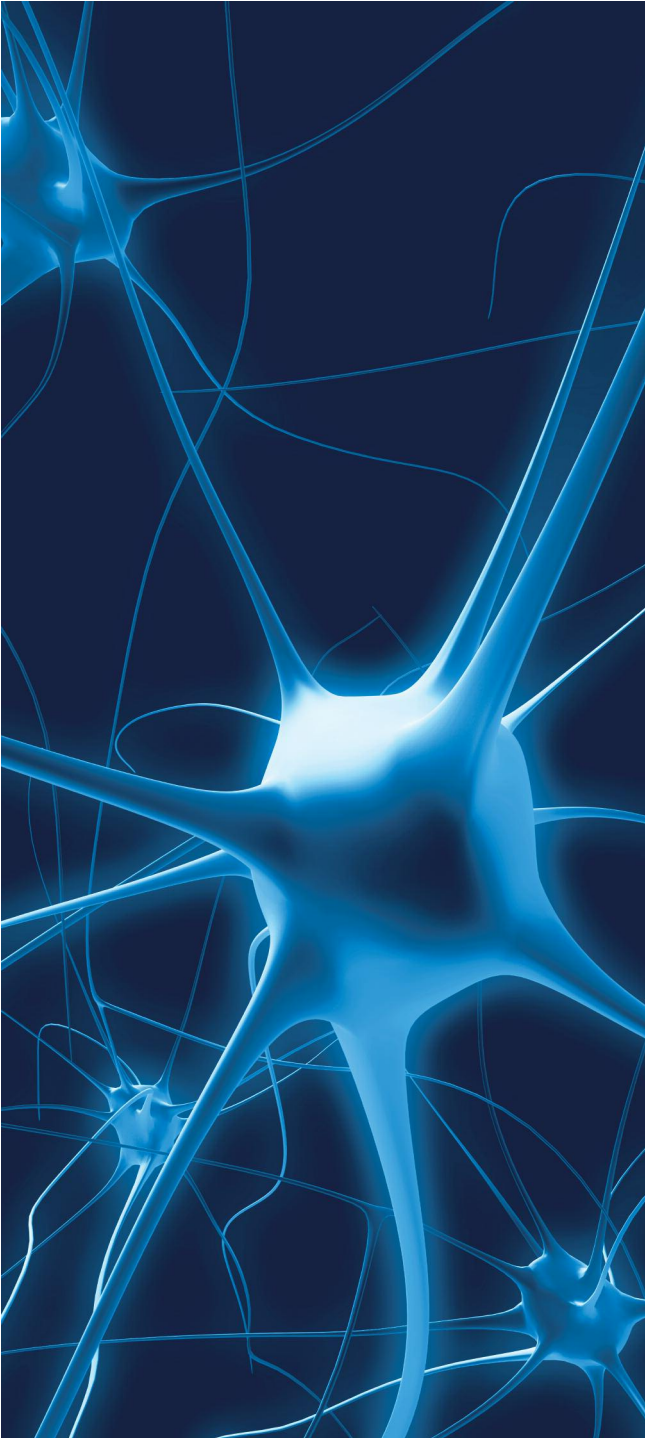


Continuing medical education

An application will be made to the EACCME® for CME accreditation of the EXCEMED workshop “**From bench to bedside: news and views in multiple sclerosis**” to be held on 29 October 2016 in Muscat, Oman.

EXCEMED adheres to the principles of the Good CME Practice group (gCMEp).





Faculty

Abdullah Al-Asmi

Department of Medicine
Sultan Qaboos University Hospital (SQUH)
Muscat, Oman

Raed A. Alroughani

Department of Medicine
Division of Neurology
Amiri Hospital
Dasman Research Institute
Kuwait City, Kuwait

Wolfgang Brück

Institute of Neuropathology
Universitätsmedizin Göttingen
Georg-August-Universität
Göttingen, Germany

Giancarlo Comi

Department of Neurology
Institute of Experimental Neurology
Vita-Salute San Raffaele University
Milan, Italy

Nicola De Stefano


Neurology and Neurometabolic Unit
Department of Neurological and Behavioral Sciences
University of Siena
Siena, Italy

Claudio Gasperini

Department of Neurosciences
Hospital "S. Camillo Forlanini"
Rome, Italy

Bernhard Hemmer

Neurology Clinic
University of Munchen
Munchen, Germany



Bassem Yamout

Multiple Sclerosis Center

Clinical Research

American University of Beirut Medical Center

Beirut, Lebanon

Programme

Programme

Saturday, 29 October 2016

- 8.45** **Welcome and introduction**
A. Al-Asmi (Oman) - G. Comi (Italy) -
B. Yamout (Lebanon)
- 9.00** **KNS: Is the epidemiology of MS changing?**
A. Al-Asmi (Oman)

Session I

Understanding multiple sclerosis:
what have we learned from basic research?

- 9.20** **L1: Emerging concepts in the pathology of MS**
W. Brück (Germany)
- 10.05** **L2: Key players in the immunopathogenesis of MS:
the synergic role of B and T lymphocytes in disease
development and sustainment**
B. Hemmer (Germany)
- 10.50** **Coffee break**
- 11.20** **L3: Immunomodulation of T and B cells: overview of
the mechanisms of action of old and novel
molecules to treat MS**
G. Comi (Italy)
- 12.05** **L4: Old clinical trials for old drugs, new clinical trials
for new drugs: what's changed?**
C. Gasperini (Italy)
- 12.45** **Lunch**

Legend: L : Lecture KNS : Keynote speech

Session II

Diagnosing and managing multiple sclerosis: guidance for clinical practice

- 13.45 L5: Diagnostic criteria, phenotypic classification and differential diagnosis**
G. Comi (Italy) / Participants
Clinical case discussion on differential diagnosis/diagnostic issues
- 14.30 L6: Is the course of MS predictable? The role of imaging and molecular biomarkers from RIS to progressive MS**
N. De Stefano (Italy)
Clinical case discussion on disease staging issues
- 15.15 L7: Paediatric MS: differential diagnosis and prognostic factors**
R.A. Alroughani (Kuwait)
Clinical case discussion on regional differential diagnosis and individual prognosis
- 16.00 Coffee break**
- 16.30 L8: Definition of suboptimal response in the new era of MS treatments: MS relapses and disability progression**
B. Yamout (Lebanon)
Clinical cases on poor response to treatment
- 17.15 L9: When to switch: navigating treatment algorithms**
C. Gasperini (Italy)
Clinical case discussion on escalation therapy
- 18.00 Wrap-up discussion and concluding remarks**

General information

Venue

This live educational workshop will take place at the:

Intercontinental Muscat

Al Kharjiya Street

Al Shati Area

Muscat 114, Oman

<http://bit.ly/1sg2XYP>

Language

The official language of this live educational workshop will be English.

CME Provider

EXCEMED - Excellence in Medical Education

Programme and Relations Manager: Serena Dell'Ariccia

T +39 06 420413 251 - F +39 06 420413 677

serena.dellariccia@excemed.org

Medical Advisor: Doriana Landi

doriana.landi@gmail.com

Registration

➤ The registration fee is **€ 150,00** and includes:

- Scientific sessions
- Coffee breaks and luncheon
- Educational materials
- Certificate of attendance

For registration and accommodation please contact:

Meridiano Congress International

Congress Manager: Sara Guglielmini

T +39 06 88595 211 - F +39 06 88595 234

sara.guglielmini@meridiano.it

Visit

www.excemed.org



Keep in touch



https://twitter.com/EXCEMED_Neuro



www.facebook.com/excemed/



www.linkedin.com/company/excemed---excellence-in-medical-education



Take a look at the new website

www.excemed.org

ONCOLOGY NEUROLOGY CARDIOMETABOLIC REPRODUCTIVE MEDICINE
IMMUNOLOGY ENDOCRINOLOGY AND METABOLISM  SPECIALTY AREA

LIVE EVENTS LEARNING RESOURCES ONLINE COURSES NEWS



HIGH IMPACT
MEDICAL EDUCATION

AN EXCLUSIVE FOCUS
ON CME

SUBMIT A PROPOSAL

Our core mission is to help physicians achieve the best possible outcomes for patients. Our name, EXCEMED, symbolizes a drive for excellence and reflects a passion for delivering the absolute best in CME. With four decades of achievement behind us and access to the world's premiere medical experts, better outcomes for patients start here. [About EXCEMED.](#)

- Six specialty areas, including neurology
- Exclusive best practice communities in multiple sclerosis: Ms alumni and Ms nurse Club
- Accessible and accredited e-learning packages
- A world-class repository of CME knowledge and learning materials
- Monthly updates about our events and resources in neurology
- Register with us online and access it all – free

Better outcomes for patients start here.

With over 40 years in the field, EXCEMED has been delivering CME-accredited programmes longer than any other provider in Europe, and now offers CME worldwide.

All EXCEMED programmes are organized solely to promote the exchange and dissemination of scientific and medical information. No forms of promotional activities are permitted. There may be presentations discussing investigational uses of various products. These views are the responsibility of the named speakers, and do not represent an endorsement or recommendation on the part of EXCEMED. This independent programme is made possible thanks to an educational grant received from Merck KGaA, Darmstadt, Germany

Improving the patient's life through medical education
www.excemed.org



EXCEMED - Excellence in Medical Education

Headquarters

14, Rue du Rhône - 1204 Geneva, Switzerland

Representative Office

Salita di San Nicola da Tolentino 1/b - 00187 Rome, Italy

T +39 06 420413 1 - F +39 06 420413 677

